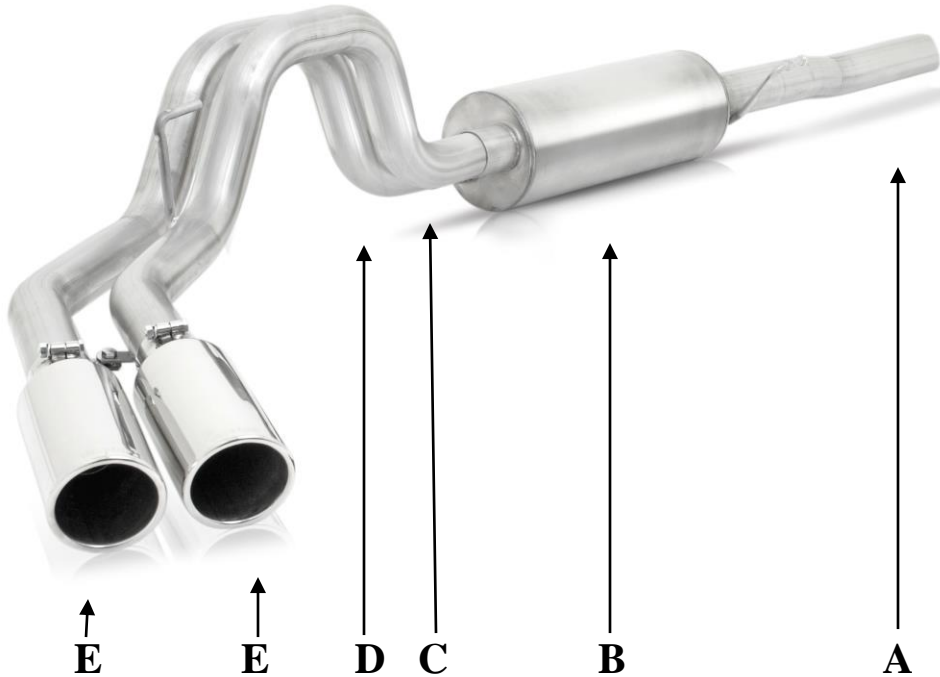




# INSTALLATION INSTRUCTIONS

FORD F150 TRUCK 2.7L-3.3L- 3.5L (Non-Hybrid) 2/4WD  
 SUPERCREW, SHORT BED 5.6" & Long Bed 6.5"  
 Super Cab, Short Bed 6.5"

**PART #69224**



ITEM	PART #	QTY	DESCRIPTION
A	999701096S	1	3" HEADPIPE WITH WELDED HANGERS
B	789800SV	1	SUPERFLOW MUFFLER
C	999701024SV	1	2.5" DRIVERR SIDE TAILPIPE W/HANGER
D	999701025SV	1	2.5" PASSENGER SIDE TAILPIPE W/HANGER
E	500640	2	4" ROLLED EDGE SS TIP
F	5762	2	2.5" BAND CLAMP
G	5763	1	3.0" BAND CLAMP
H	BO-906	1	BOLT KIT FOR TAILPIPE

**Thank you for purchasing our Gibson Exhaust system for your vehicle.  
 If you need further assistance, please do not hesitate to call our technical dept at (800) 528-3044  
 Monday through Friday, 8:00 am to 5:00 pm. 0121**

# EXHAUST INSTALLATION

## PART# 69224

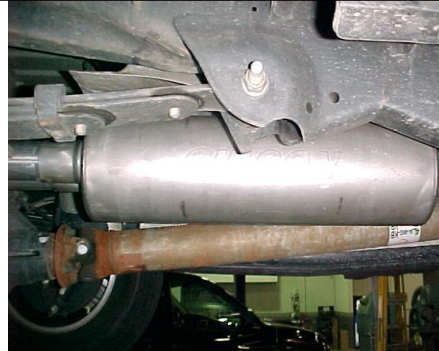
WHEN INSTALLING THIS EXHAUST SYSTEM MAKE SURE TO USE ALL THE PROPER SAFETY PRECAUTIONS. USE JACK STANDS WHEN UNDER TRUCK, SET PARKING BRAKE, BLOCK TIRES AND USE SAFETY GLASSES.

**DO NOT WORK WITH HOT PIPES!!!**

1. Disconnect the negative battery cable before removal of the OEM Exhaust. This will allow the computer to reset and recognize the new exhaust. Lay out the exhaust on the floor so it looks like the drawing and compare parts with manual. Remove the factory exhaust by cutting behind the factory muffler. Once the tail pipe has been removed un-bolt the muffler and head pipe at the clamp located in front of the factory muffler. Use wd-40 or another type of penetrating oil to remove the rubber grommets. Do not damage these they will be re used.



2. INSTALL HEADPIPE # A ONTO STOCK FLANGE. INSERT WELDED HANGER INTO RUBBER GROMMET. USE BOLT KIT PROVIDED TO SECURE. DO NOT TIGHTEN



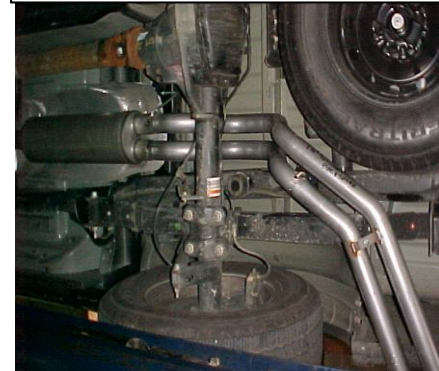
3 INSTALL MUFFLER # B ONTO HEADPIPE 1 1/2" TO 2". USE CLAMP # F TO SECURE MUFFLER TO HEADPIPE. DO NOT TIGHTEN. USE A JACK



4 INSTALL PASS. SIDE TAILPIPE # C INTO MUFFLER 1 1/2" TO 2". INSERT HANGER INTO RUBBER GROMMET, USE CLAMP # G TO SECURE PIPE TO MUFFLER. DO NOT TIGHTEN.



5. INSTALL DRIVERS SIDE TAILPIPE # D INTO MUFFLER 1 1/2" TO 2". INSERT HANGERS INTO RUBBER GROMMETS, USE CLAMP # G TO SECURE PIPE TO MUFFLER. DO NOT TIGHTEN.



6. THE TAB ON DRIVER SIDE PIPE SHOULD GO UNDERNEATH THE PASSENGER SIDE PIPE TAB. USE BOLT KIT # H TO SECURE TOGETHER.



7. Be sure to check all clearance after each section has been tightened to be sure there is proper clearance. It may take 4-500 miles for your vehicle to fully adjust to the changes in exhaust flow.

**"MAKE SURE YOU HAVE A 1" CLEARANCE ON ALL PIPES FROM ALL RUBBER BRAKE LINES, SHOCK BOOTS, TIRES, ETC..." TORQUE ALL CLAMPS TO APPROX. 100 TO 150 FT LBS.**